

Winona Concrete & Pipe Products Ltd.

489 Main Street West, Grimsby, Ontario L3M 1T4
 Ph. 905-945-8515 Email: info@winonaconcrete.com Fax. 905-945-1149
 Southern Ontario Toll Free 800-361-8515

Biofilter Media Pump Chamber



Certified
Std.B66-05

Date: Feb 1, 2009
 Model : **WBF195-EP**
 Capacity: 19,500 litres

Drawings are dimensional (not necessarily to scale)
 with unit of measure in millimeters unless otherwise noted.

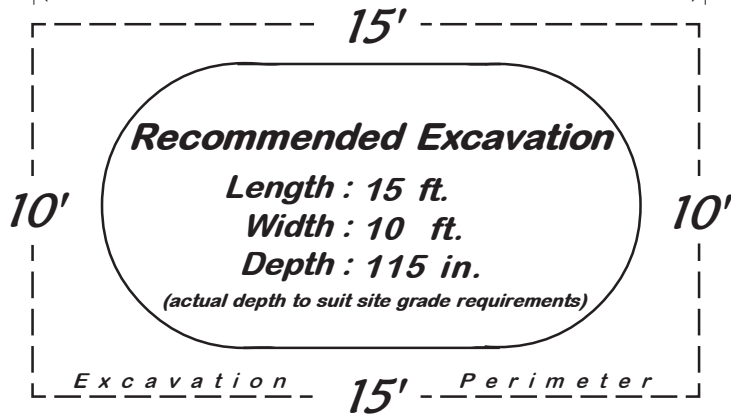
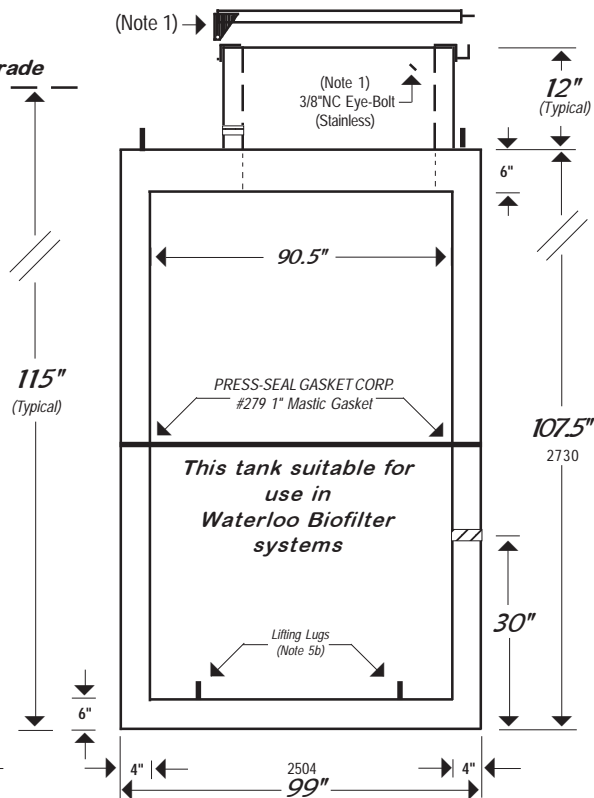
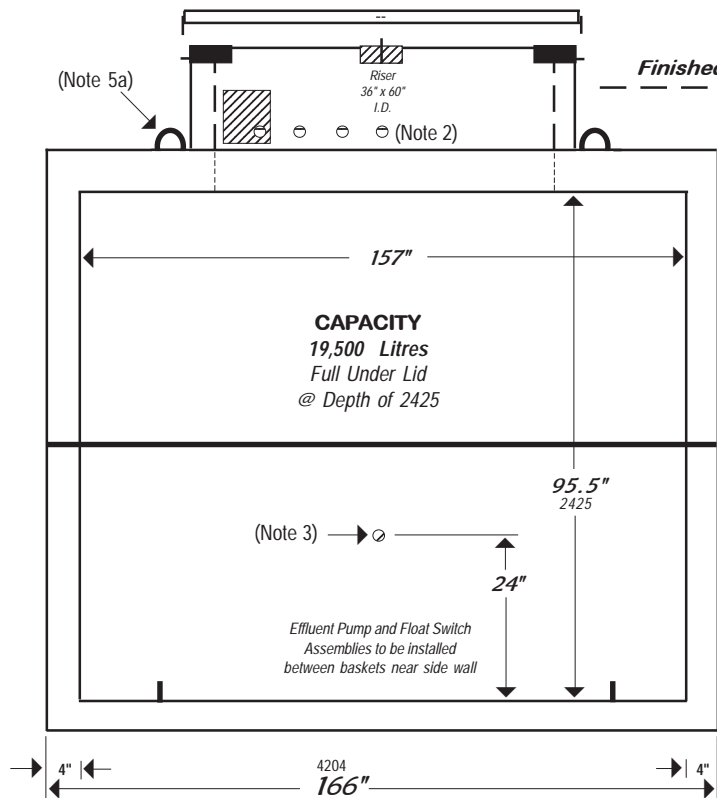
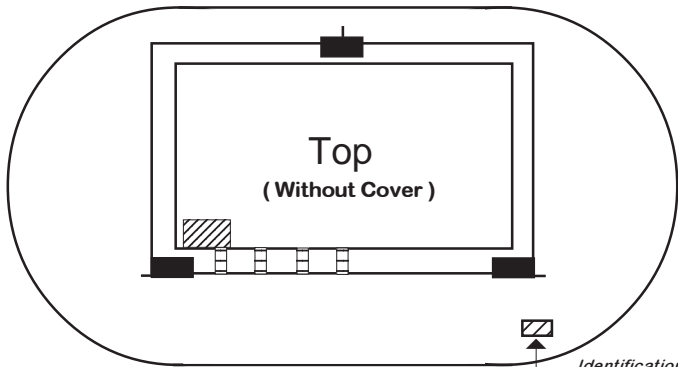
Product Information ...

1) 12 ga. Aluminum Checker Cover & 1/4 x 2.5"L Aluminium Hinges installed on riser using 3/8"x1"NC SS hex bolts & flat washers. Ring on cover and eye bolts on riser connected with 3/8" Polypropylene Rope.

2) 1" PVC Conduit ftgs cast in riser as required for electrical and effluent access.

SCEPTER JB664 PVC electrical junction box installed over-top of corner conduit coupling with 14-pair electrical Terminal Strip & holes pre-drilled for 1/2" PVC Strain Reliefs (provided).

3) Threaded Brass Coupling (typical 1.25"NPT) cast into wall (flush each side) for pump-to-field connection.



4) Cement is Portland Type 10 &/or 30 unless noted otherwise. Minimum 28-day Strength: 32 MPa

5a) 1/2" Galvanized Wire Rope Lifting Hooks (4)
 5b) Pensivania Insert PI-1 Lifting Lugs (4)

6) Steel Reinforcing as follows:
 Riser 1/4" deformed rod/Fiber
 Top, Bottom & Sides 10 mm

7a) Design max. burial depth (cover) 1000 mm
 7b) Not intended for use in areas of vehicular traffic loads.

8a) "NON SUL". not suitable for use in sulphate soils
 8b) AGINP-Above ground installation not permitted

DRY WEIGHT 28,500 POUNDS