

Winona Concrete & Pipe Products Ltd.

489 Main Street West, Grimsby, Ontario L3M 1T4
 Ph. 905-945-8515 Email: info@winonaconcrete.com Fax. 905-945-1149
 Southern Ontario Toll Free 800-361-8515

Concrete Effluent / Pump Tank



Certified
Std.B66-05

Date: Mar. 1, 2009

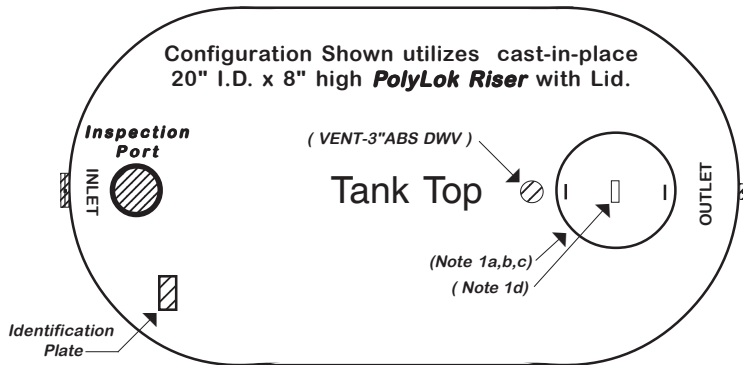
Model : **PC107-EP-PL20**

Capacity: 10,700 litres (2350 gal)

Drawings are dimensional (not necessarily to scale)
with unit of measure in millimeters unless otherwise noted.

Product Information ...

Configuration Shown utilizes cast-in-place
20" I.D. x 8" high **PolyLok Riser** with Lid.



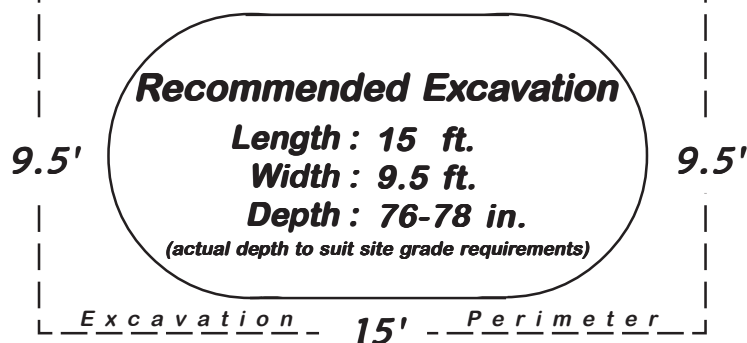
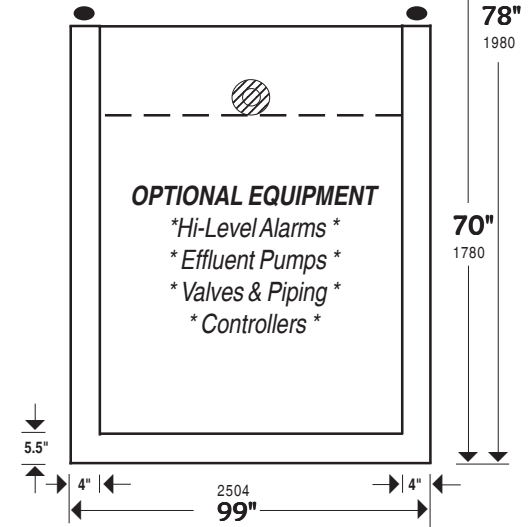
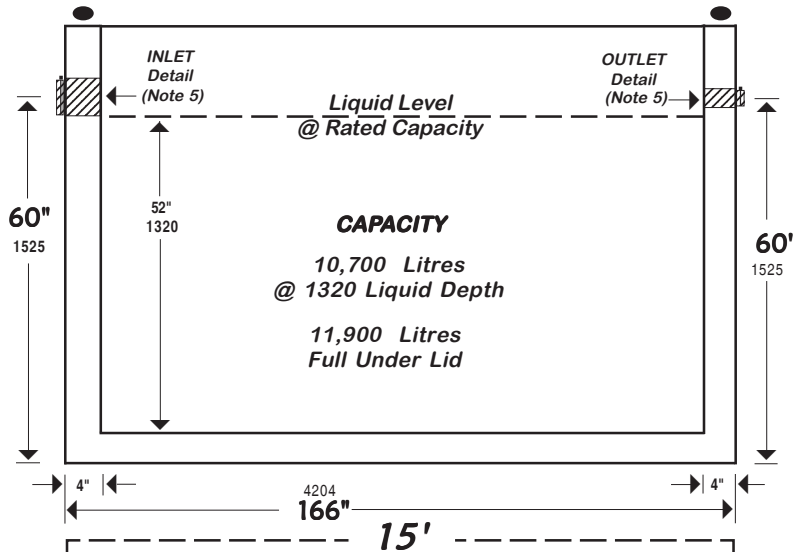
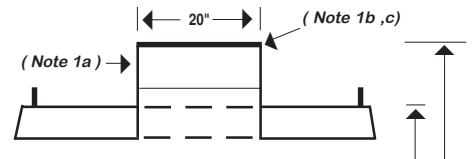
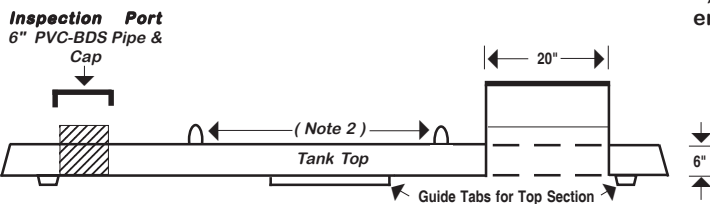
1a) **PolyLok Riser** (20" or 24" dia., plastic)
comprised of one section cast-in places with 2nd
(upper) section assembled with Gasket & SS screws.

1b) For **At or Above Grade** riser installation,
additional 6"/12" high riser sections c/w Gasket & SS
screws may be added to suit.

1c) **PolyLok Access Lid** fastened to upper riser
section with gasket & stainless hex head self - tappers.
Lifting handles (2) are recessed into lid surface.

1d) "**DANGER**" Warning Label (English & French)
is shown on lid surface.

2) **1/2" Galvanized Wire Rope** Lifings Hooks (4)
embedded vertically 24" down into side walls.



3) Steel Reinforcing as follows:
Top & Bottom..... 10 mm
Sides 10 mm

4a) Cement is Portland Type 10 &/or 30 unless
noted otherwise. .

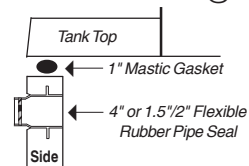
4b) Minimum 28-day Concrete Strength: 32 MPa

4c) "NON-SUL". Not suitable for sulphate soils

4d) Concrete Water-to-Cement Ratio 0.45:1 or less

5) Detail view showing typical Top - Side interface
with use of mastic gasket & flexible pipe seal.

Inlet / outlet positions sized per 4"DWV @ inlet
& combination 1.5" x 2" DWV @ outlet.



- 6a) Max. Design Burial Depth (cover)1000 mm
- 6b) "AGINP" Above ground installation not permitted
- 6c) Not intended for use in areas of vehicular traffic loading.

DRY WEIGHT 24,000 POUNDS

MAR09_PC107EP_PL20